

# KATALOG STANOVA

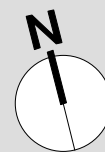
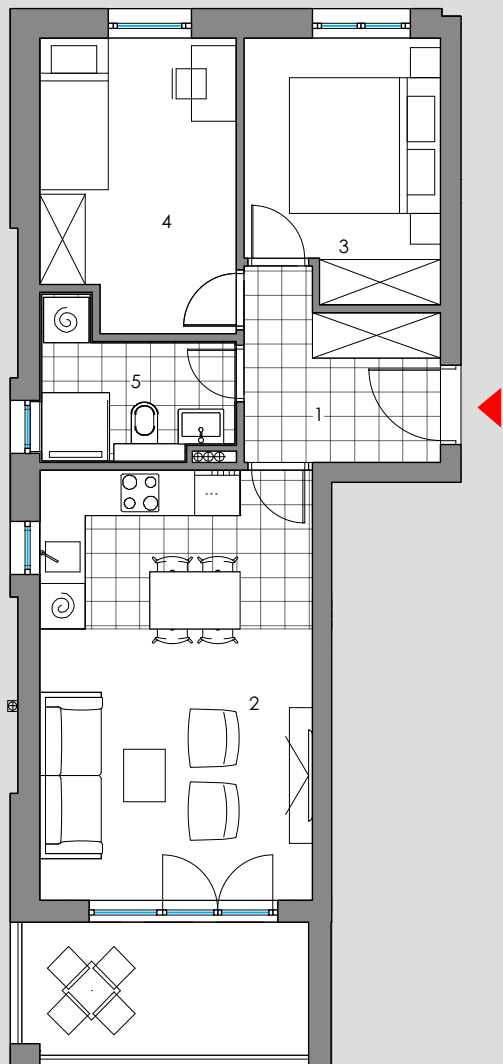
Stambena zgrada Glavičine  
na k.č.zem. 2886/1  
k.o. Klis

ADDL GLAVIČINE d.o.o.  
Đorđićeva 11, Zagreb  
OIB: 69289450116

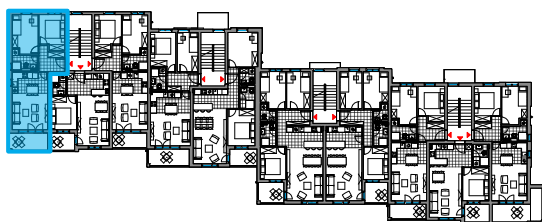
KONTAKT  
+385 (0)21 643 458  
agencija@domo.hr



## 1.kat - dvosoban stan ULAZ 4 - S3



tlocrt stana 1:100



prostorija	m <sup>2</sup>	k	m <sup>2</sup> x k
1   predsoblje	5,70m <sup>2</sup>	1.00	5,70m <sup>2</sup>
2   DN/KH/BL	20,48m <sup>2</sup>	1.00	20,48m <sup>2</sup>
3   soba 1	8,55m <sup>2</sup>	1.00	8,55m <sup>2</sup>
4   soba 2	9,65m <sup>2</sup>	1.00	9,65m <sup>2</sup>
5   kupaonica	4,05m <sup>2</sup>	1.00	4,05m <sup>2</sup>
ukupna zatvorena NKP stana			48,43m <sup>2</sup>
6   natkrivena terasa	6,63m <sup>2</sup>	0.50	3,32m <sup>2</sup>
<b>ukupna NKP stana</b>			<b>51,75m<sup>2</sup></b>