

# KATALOG STANOVA

Stambena zgrada Glavičine  
na k.č.zem. 2886/1  
k.o. Klis

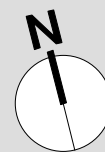
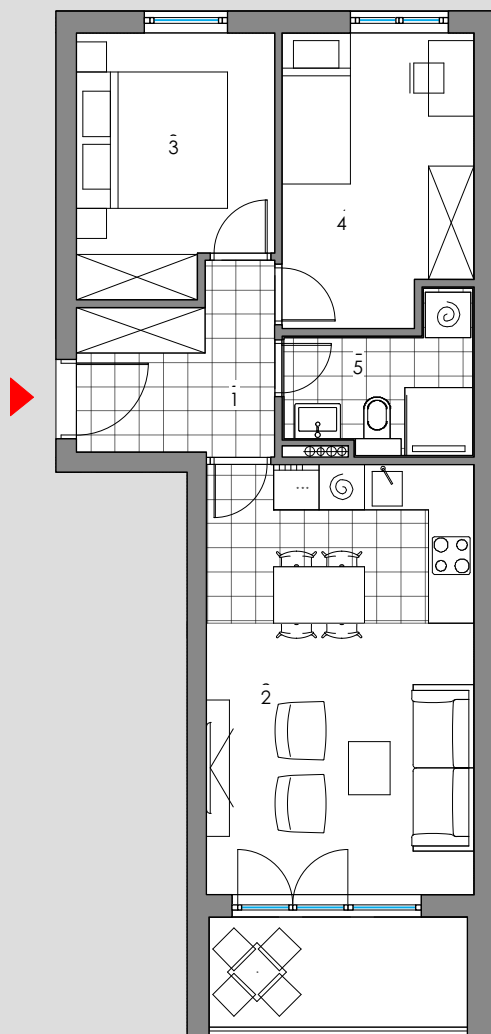
ADDL GLAVIČINE d.o.o.  
Đorđićeva 11, Zagreb  
OIB: 69289450116

KONTAKT  
+385 (0)21 643 458  
agencija@domo.hr

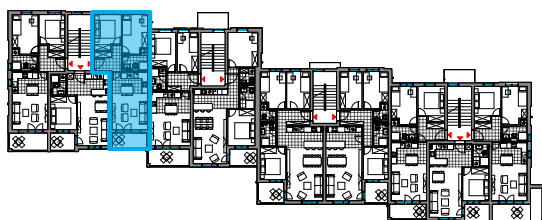


1.kat - jednosoban stan

## ULAZ 4 - S5



tlocrt stana 1:100



prostorija	m <sup>2</sup>	k	m <sup>2</sup> x k
1   predsoblje	5,65m <sup>2</sup>	1.00	5,65m <sup>2</sup>
2   DN/KH/BL	20,13m <sup>2</sup>	1.00	20,13m <sup>2</sup>
3   soba 1	8,61m <sup>2</sup>	1.00	8,61m <sup>2</sup>
4   soba 2	9,41m <sup>2</sup>	1.00	9,41m <sup>2</sup>
5   kupaonica	3,97m <sup>2</sup>	1.00	3,97m <sup>2</sup>
ukupna zatvorena NKP stana			47,77m <sup>2</sup>
6   loggia	4,99m <sup>2</sup>	0.75	3,74m <sup>2</sup>
ukupna NKP stana			51,51m <sup>2</sup>