

# KATALOG STANOVA

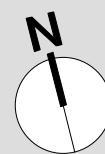
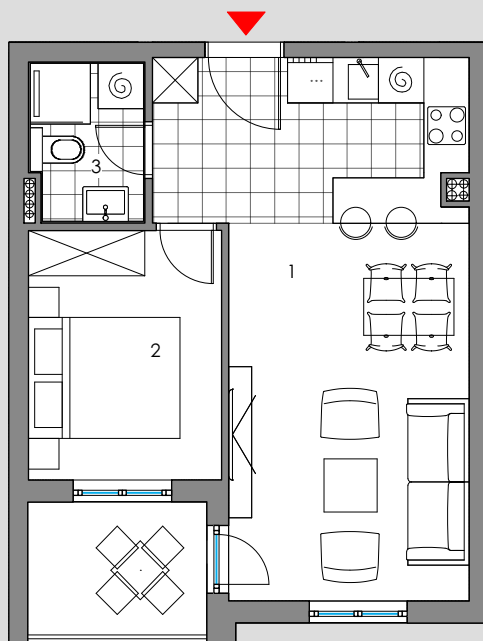
Stambena zgrada Glavičine  
na k.č.zem. 2886/1  
k.o. Klis

ADDL GLAVIČINE d.o.o.  
Đorđićeva 11, Zagreb  
OIB: 69289450116

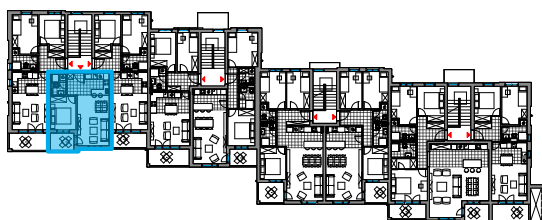
KONTAKT  
+385 (0)21 643 458  
agencija@domo.hr



## 2.kat - jednosoban ULAZ 4 - S7



tlocrt stana 1:100



prostorija	m <sup>2</sup>	k	m <sup>2</sup> x k
1   hodnik, DB, KH, BL	24,90m <sup>2</sup>	1.00	24,90m <sup>2</sup>
2   soba 1	8,41m <sup>2</sup>	1.00	8,41m <sup>2</sup>
3   kupaoonica	2,93m <sup>2</sup>	1.00	2,93m <sup>2</sup>
ukupna zatvorena NKP stana			36,24m <sup>2</sup>
4   loggia	4,17m <sup>2</sup>	0.75	3,13m <sup>2</sup>
ukupna NKP stana			39,37m <sup>2</sup>