

# KATALOG STANOVA

Stambena zgrada Glavičine  
na k.č.zem. 2886/1  
k.o. Klis

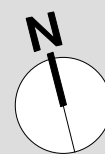
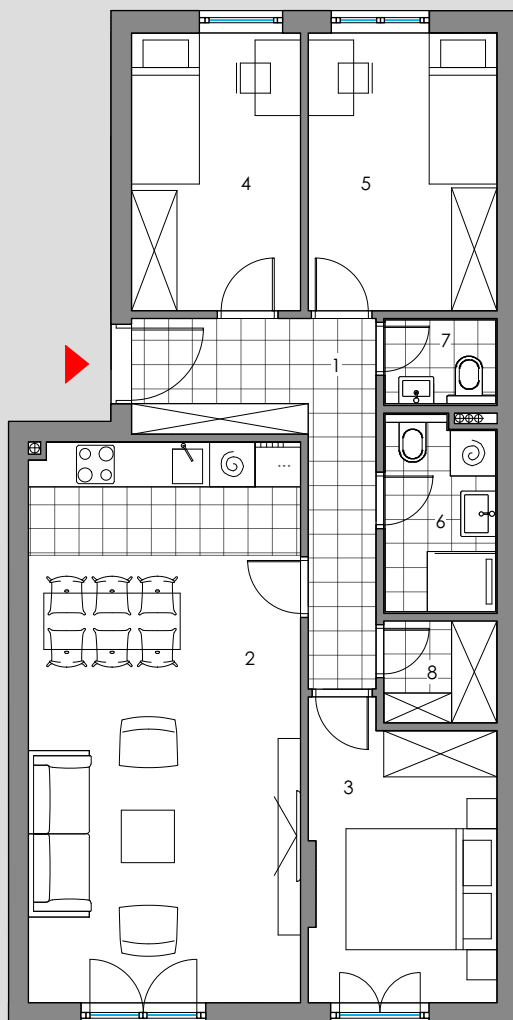
ADDL GLAVIČINE d.o.o.  
Đorđićeva 11, Zagreb  
OIB: 69289450116

KONTAKT  
+385 (0)21 643 458  
agencija@domo.hr

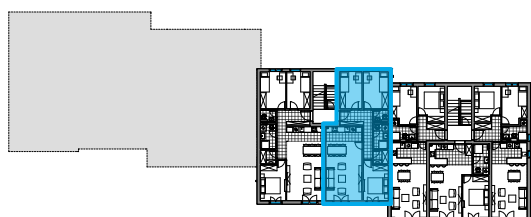


suteren - trosoban stan

## ULAZ 2 - S2



tlocrt stana 1:100



prostorija	m <sup>2</sup>	k	m <sup>2</sup> x k
1   predsoblje	7,98m <sup>2</sup>	1.00	7,98m <sup>2</sup>
2   DB/KH/BL	26,47m <sup>2</sup>	1.00	26,47m <sup>2</sup>
3   soba 1	9,29m <sup>2</sup>	1.00	9,29m <sup>2</sup>
4   soba 2	8,22m <sup>2</sup>	1.00	8,22m <sup>2</sup>
5   soba 3	9,19m <sup>2</sup>	1.00	9,19m <sup>2</sup>
6   kupaonica	3,59m <sup>2</sup>	1.00	3,59m <sup>2</sup>
7   wc	1,55m <sup>2</sup>	1.00	1,55m <sup>2</sup>
8   ostava	2,02m <sup>2</sup>	1.00	2,02m <sup>2</sup>
ukupna zatvorena NKP stana			68,31m <sup>2</sup>
9   vrt	10,73m <sup>2</sup>	0.10	1,07m <sup>2</sup>
ukupna NKP stana			69,38m <sup>2</sup>